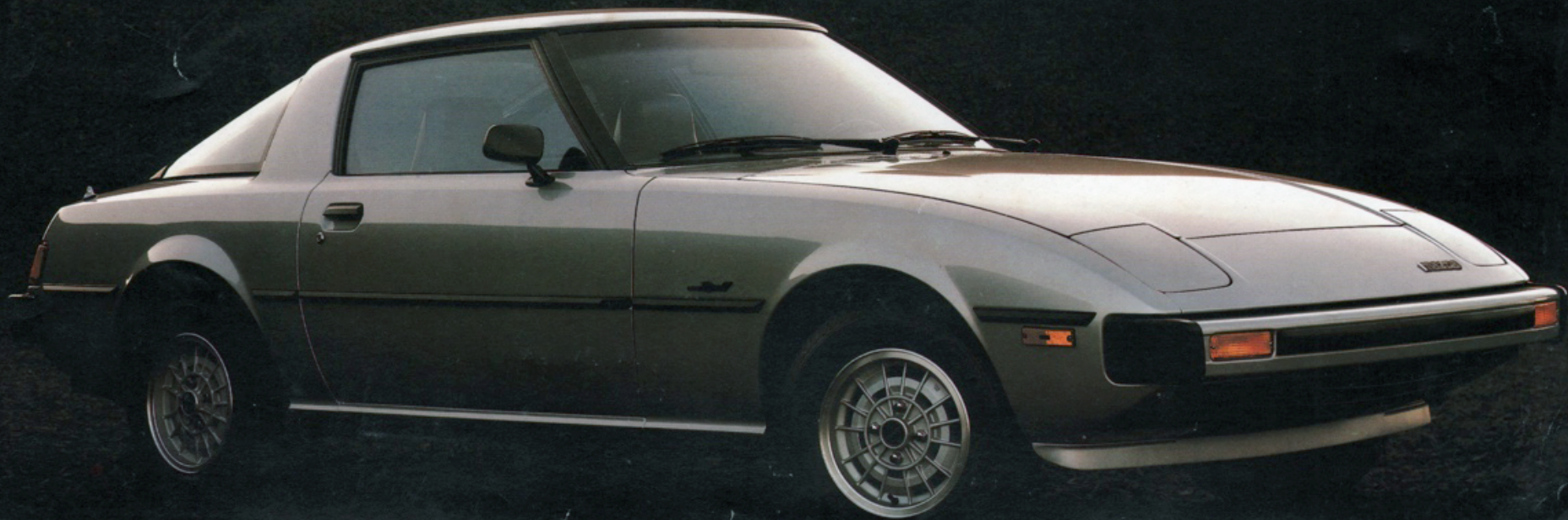
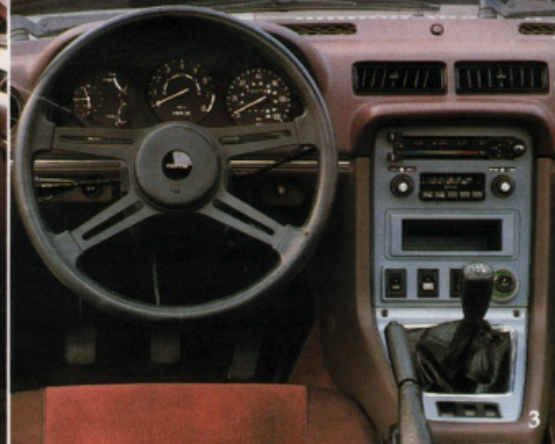


# Mazda RX-7

The more you look, the more you like.







## "The most significant import car for 1979!"

The Mazda rotary: uniquely compact yet powerful. It made possible a *front mid-engine* layout. Ideal weight distribution. Superb handling. Plus the RX-7's sleek aerodynamic shape, adding to high performance and good gas economy:  $\overline{17}$  estimated mpg, 28 estimated highway mpg (GS model)\*

Both the S Model (1, background) and the lavishly equipped GS Model (foreground) come with orthopedically contoured bucket seats (2), full instrumentation (3), and much more. (See below.)

*Car & Driver's* readers voted RX-7 "the most significant import car for 1979." *Road & Track* called it "an enthusiast's dream come true." Some value, too. Compare its reasonable sticker price with other high-performance sports cars. You'll find Mazda High Value Engineering is no myth.

### RX-7 Standard Features

**S & GS Models:** Steel-belted radial tires • Front anti-roll bar • Styled steel wheels • Electrically retractable headlights • Tachometer that's also a voltmeter • AM/FM stereo • Electrically powered antenna • Rear-window defroster • Side-window demisters • Tinted glass • Cut-pile carpeting • Quartz-crystal clock • Reclining high-back bucket seats • Ventilated front disc & finned rear drum brakes (power-assisted) • Dual outside rear-view mirrors • Day/Night rear-view mirror • Vanity mirror on right sunvisor • Locking fuel filler door. **GS Model only:** 5-speed overdrive transmission •

Rear anti-roll bar • Electric remote hatch release • Intermittent windshield wipers • Windshield sunshade band • Cargo hold-down straps • Full-length body side mouldings • Central console • Driver's footrest • 4-spoke padded steering wheel • Map pockets in doors. **Options available on both models:** Air conditioning • Automatic transmission. **Options available on GS Model only:** Aluminum wheels • Pop-open top that's also removable.

### 1980 RX-7 Standard Features

#### ENGINE

Type: Rotary, 2-rotor inline

SAE Net Horsepower: 100 @ 6000 rpm

SAE Net Torque: 105 lbs./ft. @ 4000 rpm

#### ELECTRICAL

System: 12 Volt

#### Battery:

	Federal	Calif.
Man. Trans., 12 Volt	45 Amp. Hr.	45 Amp. Hr.
Auto. Trans., 12 Volt	55 Amp. Hr.	45 Amp. Hr.

#### TRANSMISSIONS

4-Speed Manual (Standard with S Model)

5-Speed Manual Overdrive (Standard with GS)

3-Speed Automatic (Optional, both models)

#### SUSPENSION

Front: Independent Struts/Coil Springs with Anti-roll Bar and Tension Rods

Rear: 4-Link Type, Watt Linkage, Coil Springs & Anti-Roll Bar (GS model)

#### STEERING

Ratio: Variable 17-20:1

Turning Diameter (Curb-to-Curb): 31.5 feet

#### BRAKES

Power-assisted Front Ventilated Discs

Rear: Finned Drums

#### WHEELS AND TIRES

Wheels: 5J Styled Steel; 5.5 JJ Aluminum  
Optional on GS

Tires: 165 HR 13 Steel-belted Radials (S Model);  
185/70 HR 13 Steel-belted Radials (GS Model)

#### REAR AXLE

Ratio: 3.909

#### CAPACITIES

Fuel: 14.5 gallons; Type: Unleaded

#### CURB WEIGHT (Pounds)

	Federal	Calif.
With 4-speed:	2395	2395
With 5-speed overdrive:	2430	2430
With 3-speed Automatic:	2465	2455

#### DIMENSIONS

Wheelbase: 95"

Overall Length: 169"

Overall Width: 65" (GS Model: 66")

Overall Height: 50"

Track: Front—56"; Rear—55"

Head Room: 37.1"

Leg Room: 41.5"

Shoulder Room: 52"

Cargo Volume (Cubic Feet): 13.8

\*  $\overline{16}$  estimated mpg, 25 estimated highway mpg for S model. EPA estimates for comparison purposes. The mileage you get may vary, depending on how fast you drive, the weather, and trip length. Actual highway mileage will probably be less. California,  $\overline{16}$  estimated mpg, 27 estimated highway mpg, GS model.  $\overline{16}$  estimated mpg, 24 estimated highway mpg, S model.

**LIMITED ENGINE WARRANTY:** Mazda warrants that the basic engine block and its internal parts will be free of defects with normal use and prescribed maintenance for 3 years or 50,000 miles, whichever comes first, or Mazda will fix it free. This transferable, limited warranty is free on all new rotary-engine Mazda RX-7's sold and serviced in the United States and Canada.

Mazda rotary engine licensed by NSU-Wankel.

Some of the equipment shown on product illustrations is optional, at extra cost. Mazda reserves the right to make changes from time to time, without notice, in prices, models and specifications.

Printed in U.S.A.

Part No. 9999-92-1010-80

**mazda**  
The more you look,  
the more you like.